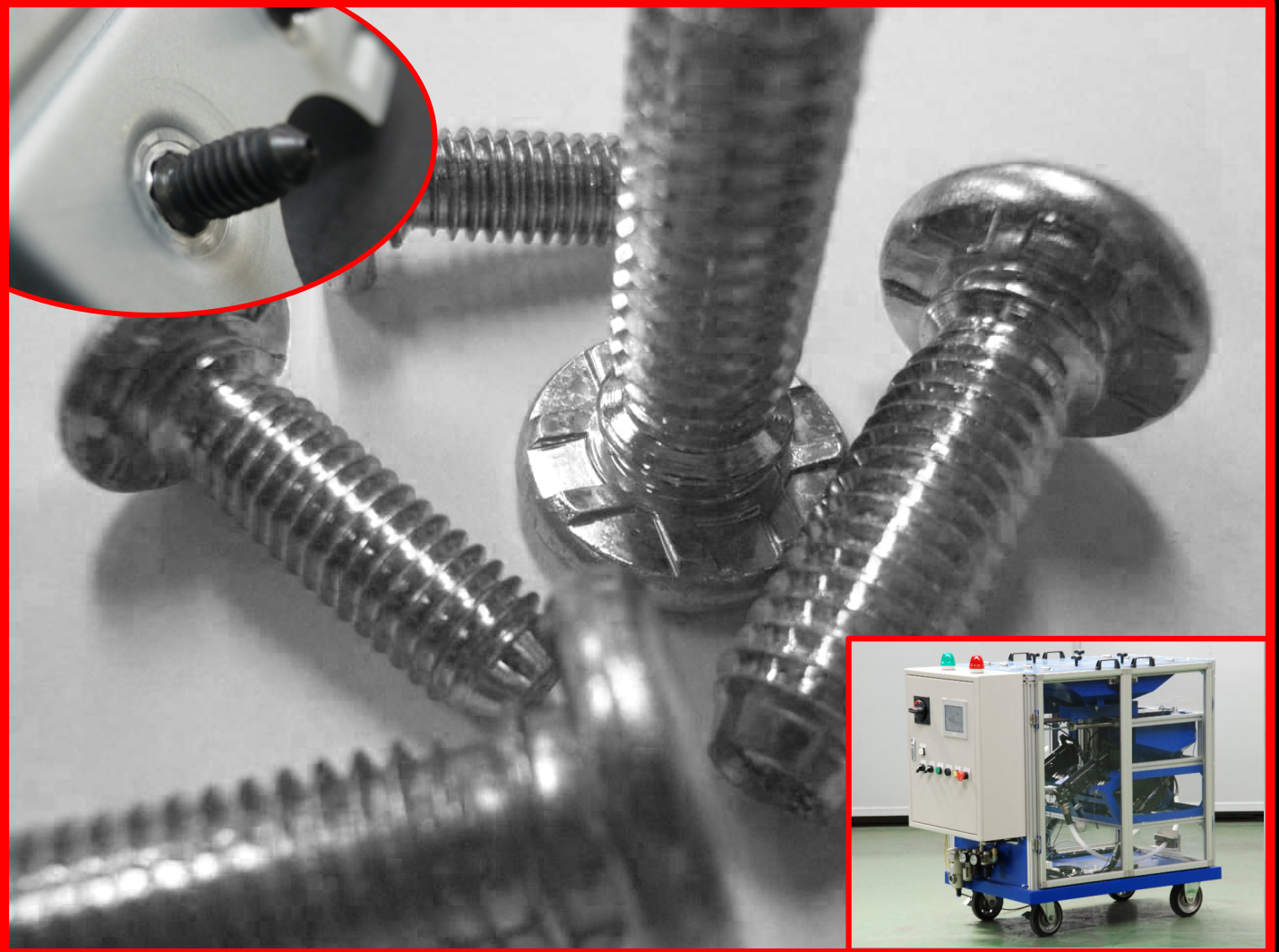


CHECKLE®

PAT.P

— clinch bolt —

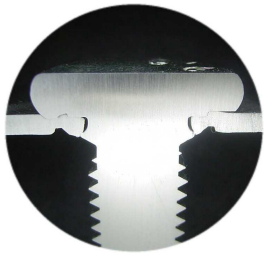


The ribs very specially designed in check plus ring stoppers assure the reliability on the bolts fixed to the panel so tightly.

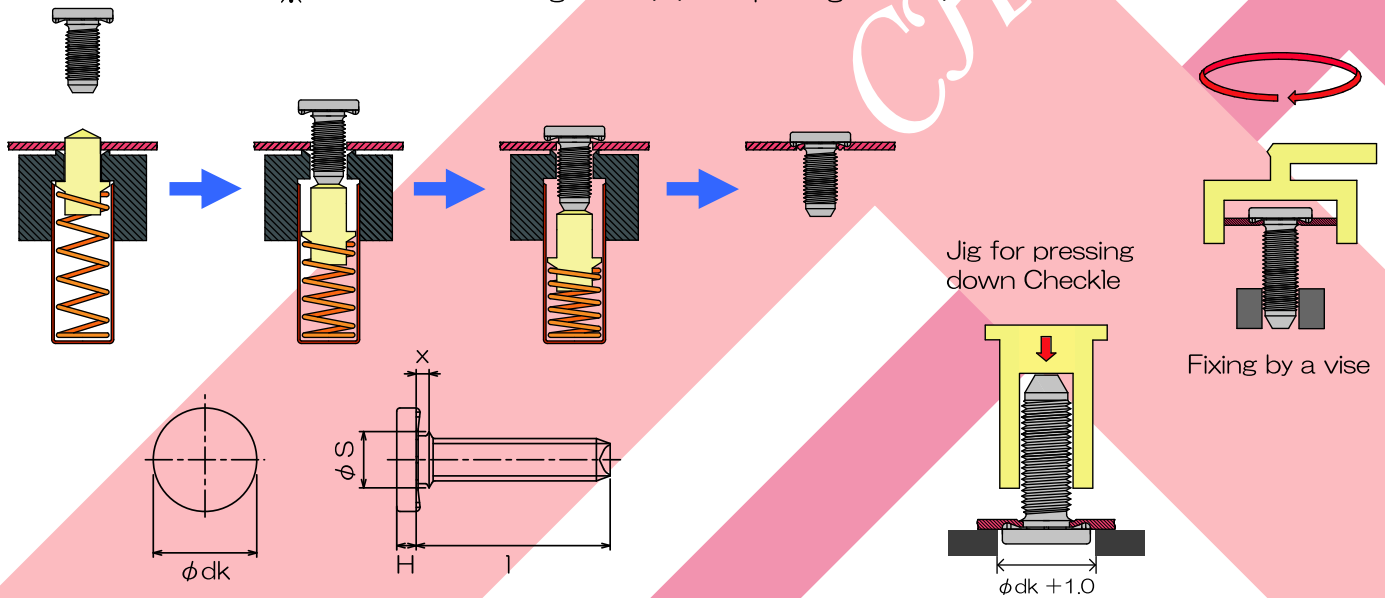
The bolts could be automatically clinched by advantage of our special clenching system.

PIAS

The features of the clinch bolt Checkle



- ※ Fastened when Checkle is pressed into panel, and it gives you an easy operation.
- ※ Available for sheets colored and plated without welding process and therefore your working condition will be improved.
- ※ Every checkle has a wide range of plate thickness applied and therefore it will reduce your worry for stock management.
- ※ Both high push-out load and break-off torque contribute to reliability.
- ※ Checkle gives you a great efficiency with our original clinching system and an inline operation is available.
- ※ The thread strength is 9.8. The plating is CR3.



Technical Data

size	ϕdk (mm)	ϕS (mm)	H (mm)	X (mm)	plate thickness (mm)	push out load (kN)	break off torque (N · m)	staking die	staking force (kN)	hole die (mm)
M5-0.8	10.0 $\begin{smallmatrix} +0 \\ -0.5 \end{smallmatrix}$	5.6 ± 0.1	2.0 $\begin{smallmatrix} +0 \\ -0.2 \end{smallmatrix}$	1.2 $\begin{smallmatrix} +0.2 \\ -0.1 \end{smallmatrix}$	0.6	0.5	6.9	CB51Y	27	5.7 ± 0.05
					0.8	1.1	11.2			
					1.0	1.5	11.3			
					1.2	1.7	11.3	CB52Y		
					1.6	2.2	11.3			
					2.3	2.5	11.3			
M6-1.0	12.0 $\begin{smallmatrix} +0 \\ -0.8 \end{smallmatrix}$	6.7 ± 0.1	2.0 $\begin{smallmatrix} +0 \\ -0.2 \end{smallmatrix}$	1.5 ± 0.2	0.8	1.2	18.0	CB61Y	36	6.8 ± 0.05
					1.0	1.5	20.6			
					1.2	2.2	21.1	CB62Y		
					1.6	2.8	20.3			
					2.3	3.5	19.7			
					3.2	4.2	19.6			
M8-1.25	16.0 $\begin{smallmatrix} +0 \\ -0.8 \end{smallmatrix}$	8.7 ± 0.1	3.0 $\begin{smallmatrix} +0 \\ -0.2 \end{smallmatrix}$	1.8 ± 0.2	0.8	1.4	18.3	CB81Y	57	8.8 ± 0.05
					1.0	2.0	33.2			
					1.2	2.6	37.7	CB82Y		
					1.6	4.0	53.9			
					2.3	5.0	50.5			
					3.2	7.9	49.9			

※ The strength values hereunder(push out and torque out values)are not any values guaranteed but all actually tested and measured only.

QP FASTENING WORKS Co., LTD

3-44,4-chome, shinkitajima,
suminoe-ku, Osaka, Japan
tel 81-6-6681-9988
fax 81-6-6681-6532
<http://www.qp-seira.jp>

